



Alle aufgeführten Glasuren sind kennzeichnungsfrei

Alle Glasurmuster auf weißem Ton

Lieferform : 1 kg Pulver

Effekt- Glasuren

1 kg Gebinde



C-5220
Perlmutter



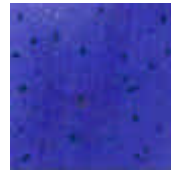
C-5250
Tabak



C-5260
Algengrün



C-5650
Blaugrün



C-5830
Enzianblau



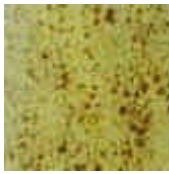
C-8387
Wüstensand



214A
Klatschmohn



2001
Bahamas



2008
Birne Abata



2009
Ceylon



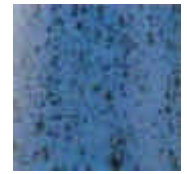
2011
Palomablau



2012
Tannengrün



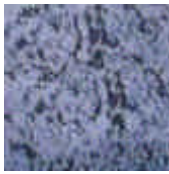
2014
Madagaskar



2016
Marina



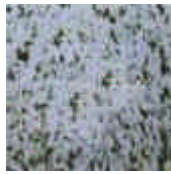
2017
Chrysocola



2130
Starlet



2135
Granada



2137
Olymp



2138
Super Nova



2200
Midnightblue



2201
Ozean



2202
Fire Opal



2206
Aquamarin



2208
Bergsee



2214
Silberlüster



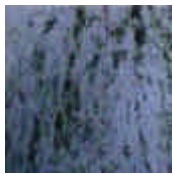
2215
Grüner Juwel



2216
Muschelweiß



2218
Goldbronze



2247
Stahlblau



2250
Ölfleck



2263
Gänseblümchen



SGL-28
weiss glänzend deckend

Sonderglasur
1000°C - 1200°C

Lieferbar: Pulver 1 kg



schwarze Effekt-Glasur mit
weißer Glasur am Vasenrand



Welte Glanz - Glasuren

1 kg Gebinde



KGG-12
weiss



KGG-16
zirkon-weiss



KGG-26
farblos transp.



KGG-29
grün, transp.



KGG-30
blau transp.



KGG-33
honig-braun



KGG-35
dunkelbraun



KGG-44
craquelé-weiss



KGG-51
lila



KGG-52
kanariengelb



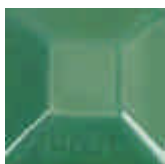
KGG-53
chrom-grün



KGG-54
pfauenblau



KGG-56
farblos



KGG-65
schilfgrün



Welte Glanz – Glasuren

1 kg Gebinde



KGG-68
rot



KGG-69
spanischrot



KGG-70
superweiss



KGG-71
transparent-glanz



KGG-72
beige-glanz



KGG-73
lachs-glanz



KGG-74
erika-glanz



KGG-75
violett-glanz



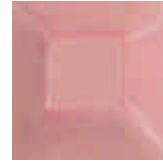
KGG-76
blauviolett



KGG-77
schwarz-glanz



KGG-78
weiß-glanz



KGG-79
korallen-glanz



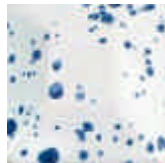
KGG-81
kosmos-azur



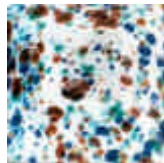
KGG-82
kosmos-blau



KGG-83
kosmos-schwarz



KGG-84
blaugraniti



KGG-88
buntgraniti



KGG-89
karneval



KGG-94
magma



KGG-102
blau opaqué



KGG-111
sonnengelb



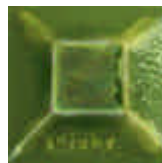
KGG-112
apfelsine



KGG-113
mohnrot



KGG-114
feuerrot



KGG-115
ostergrün



KGG-116
efegrün



KGG-117
orange-gelb



KGG-118
granny smith



KGG-119
altgrün



KGG-120
brauner Honig



KGG-121
sirup-braun



KGG-122
welte-blau



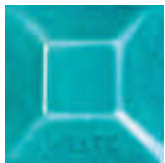
KGG-123
morgentau



KGG-124
glasgrün



KGG-125
craquelé-transp.



KGG-126
persisch blau



KGG-127
raps



KGG-128
kürbis



KGG-129
tomate



KGG-130
raps-sprenkel



KGG-131
kürbis-sprenkel



KGG-132
tomate-sprenkel



Welte Matt – Glasuren

1 kg Gebinde



KGM-5
türkis deckend



KGM-29
creme deckend



KGM-31
ocker deckend



KGM-36
farblos



KGM-50
farblos matt



KGM-51
rot matt



KGM-52
farblos matt



KGM-53
weiss



KGM-54
weiss



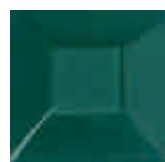
KGM-55
vanille



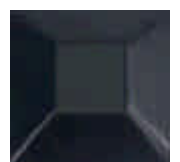
KGM-56
wüstengelb



KGM-57
aprikose



KGM-61
fichte



KGM-62
schwarz



Pulver - Glasuren

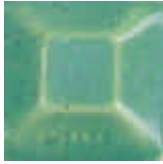
Brennbereich 1020° - 1080°C

Welte Matt – Glasuren

1 kg Gebinde



KGM-64
basaltgrau



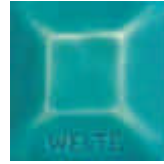
KGM-78
kieselgrün



KGM-79
kieselblau



KGM-80
kieselgrau



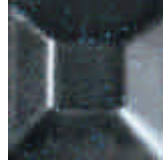
KGM-85
türkisblau matt



KGM-86
mitternachtsblau



KGM-87
erdbraun-matt



KGM-89
elegance



KGM-90
leuchtend-blau



KGM-91
terra-cotta-matt



KGM-92
blau-melliert



KGM-93
granny-matt



KGM-94
craquelé matt



KGM-95
granitgrau



KGM-96
granitgrün



KGM-97
granitblau

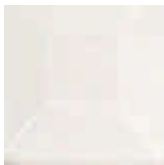


KGM-98
granitcotto



Welte Effekt – Glasuren

1 kg Gebinde



KGG-12
weiss



KGG-16
zirkon-weiss



KGG-26
farblos transp.



KGG-29
grün, transp.



KGG-30
blau transp.



KGG-33
honig-braun



KGG-35
dunkelbraun



KGG-44
craquelé-weiss



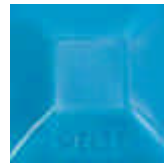
KGG-51
lila



KGG-52
kanarien-gelb



KGG-53
chrom-grün



KGG-54
pfauen-blau



KGG-56
farblos



KGG-65
schilfgrün



KGE-23
mittelgrün



KGE-33
sandstein



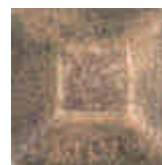
KGE-34
sandstein blau



KGE-35
sandstein türkis



KGE-36
sandstein grün



KGE-37
sandstein rosa



KGE-60
eierschale



KGE-61
vogelei



KGE-65
avocado-grün



KGE-66
oxenblut



KGE-68
mangan-braun



KGE-70
terra-beige



KGE-71
melonen-grün



KGE-77
vogelei mit Effekt



KGE-78
rostbraun



KGE-79
irisch-moos



KGE-80
palmengrün



KGE-81
eisblau



KGE-82
ozeanblau



KGE-123
aventurin



KGE-124
braun



Welte Effekt – Glasuren

1 kg Gebinde



KGE-138
maistroh



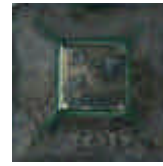
KGE-139
gobi



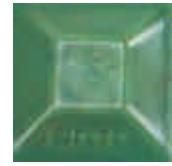
KGE-144
reseda



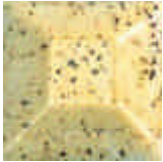
KGE-145
blauschatten



KGE-146
schmiedeschwarz



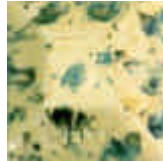
KGE-148
algenrün



KGE-150
kork



KGE-151
savanne



KGE-153
savannengrün



KGE-154
perlmutter-creme



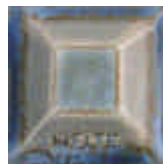
KGE-155
kristall-creme



KGE-157
provence



KGE-158
polarblau



KGE-164
arkansas



KGE-167
alabama



KGE-168
alaska



KGE-171
carolina



KGE-173
kentucky



KGE-174
maryland



KGE-175
louisiana



KGE-176
hawaii



KGE-177
missouri



KGE-178
georgia



KGE-181
idaho



KGE-182
california



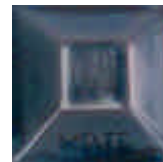
KGE-183
illinois



KGE-186
ohio



KGE-187
columbia



KGE-188
oklahoma



KGE-189
new jersey



KGE-201
stahl-antik



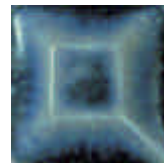
KGE-206
seetang



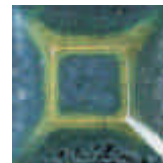
KGE-207
herbstlaub



KGE-210
perlenweiss



KGE-222
blau metallic



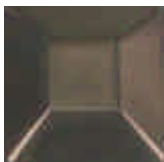
KGE-224
mystik blau



KGE-225
tiefsee blau



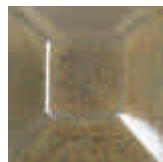
KGE-226
nappa metallic



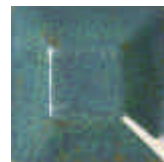
KGE-227
bronicit



KGE-228
eismeer



KGE-230
lüster-altgold



KGE-231
lüster-goldblau



KGE-232
grün-metall



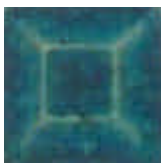
KGE-235
rustic-kölsch



KGE-236
stahlblau-alterna



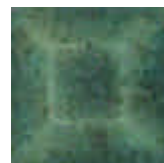
KGE-241
malachit-alterna



KGE-245
maui



KGE-246
martinique



KGE-247
baikal



KGE-248
antigua



KGE-249
guinea



KGE-250
burma



Steingut - Glasuren

Brennbereich 1130° - 1170°C

Pulverglasuren

Lieferform : 1 kg

Alle abgebildeten Glasurmuster sind auf weißem Scherben glasiert.²

Die Glasur [C-570 Farblos glzd.](#) + [C-430 Transparent matt](#) eignen sich gut als Basisglasuren zum Einfärben (z.B. Oxiden und Farbkörpern)



C-570 Farblos matt



C-560 Wolkenspiel



C-550 Titan



C-540 Moor



C-530 Haselnuß



C-520 Honig



C-510 Gobi



C-500 Metallgrün



C-490 Kupfergrün



C-480 Enzian



C-470 Kornblume



C-460 Aubergine



C-450 Mais



C-440 Altweiß



C-430 Transp. glzd.



C-420 Steppe



C-410 Iris



C-400 Opalin



C-390 Nugat



C-380 Island



C-370 Gletscher



C-360 Zitrone



C-350 Jade



C-340 Tomate



C-330 Aprikose



C-320 Eisse



C-310 Wirsching



C-300 Himbeere



Steinzeug Glasuren

1 kg Gebinde

Brennbereich 1200° C



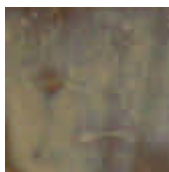
C-250 Transparent Grundglasur



C-720 Gletscherblau mitteblau meliert



C-810 Pechschwarz mattes schwarz



C-830 Sepiabraun dick goldbraun

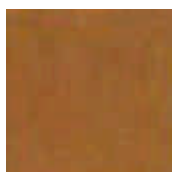
C-830 Sepiabr. und eine blaue Glasur darüber.



C-850 Pappel hellbraun



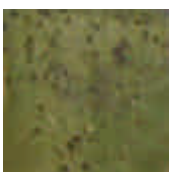
C-880 Schimmelweiß matt, Netzmaserung



C-920 Cognac hellbraune Effekt-



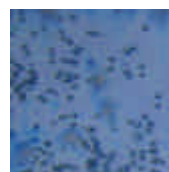
C-940 Vogelei mit braunen Sprenkel



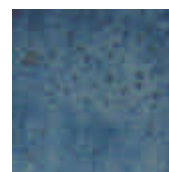
C-950 Moosgrün mattes mit Sprenkel



C-990 Weiß seidenglänzend



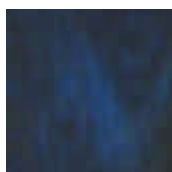
C-1010 Skyblue graublau meliert



C-1030 Lugano blau mit Sprenkel



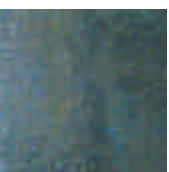
C-1040 Orbit dunkelblau Effekt



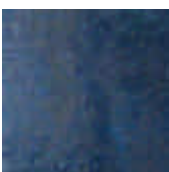
C-1050 Alaska blaugüne glzd.



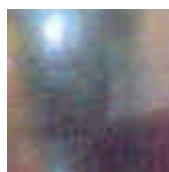
C-1060 Irischgrün petrol-grünblau



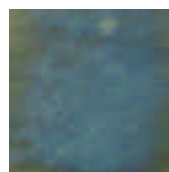
C-1070 Serenade matt, blau - grün



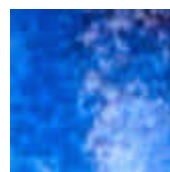
C-1080 Blautanne dunkelblau



C-1090 Italia mittel-blau-braun



C-1110 Steppen Kristall zartes blaugrün



C-1130 Melodie mittelblau



Welte Steinzeug – Glasuren Pulver

1 kg Gebinde



KGS-1
farblos



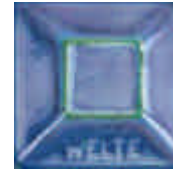
KGS-2
weiss



KGS-5
creme effekt



KGS-7
gelb-braun



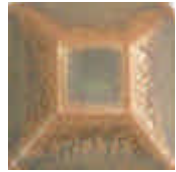
KGS-13
blau matt



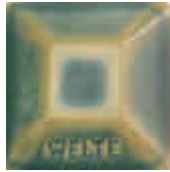
KGS-15
creme-kristall



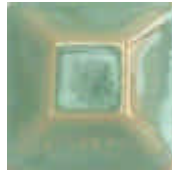
KGS-16
kupfer-rustikal



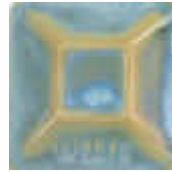
KGS-17
sisal



KGS-18
schiefer-antik



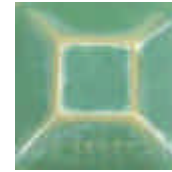
KGS-21
seladon



KGS-23
blaugrau



KGS-32
olivcreme



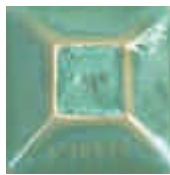
KGS-40
weidegrün



KGS-41
herbstgold



KGS-43
blauschimmel



KGS-44
biotop



KGS-45
bergkristall



KGS-46
kristallmarmor



KGS-47
transparent matt



KGS-48
weiss matt



KGS-49
samt beige



KGS-50
samt braun



KGS-51
regenwald



KGS-52
pazific blau



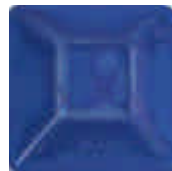
KGS-53
golfstrom



KGS-54
blauer planet



KGS-55
blauer flieder



KGS-56
wasserfall



KGS-57
nachtschatten



KGS-59
türkis matt



KGS-60
ägäis blau



KGS-60
steinblau



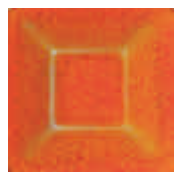
KGS-61
bermuda-grün



KGS-64
apricot



KGS-65
solar-gelb



KGS-66
orange



KGS-67
hellrot



KGS-68
dunkelrot



KGS-69
indigo glzd.



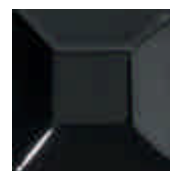
KGS-70
pinie



KGS-71
ginster



KGS-72
merlot



KGS-73
nero

Der Brennbereich von 1150°C bis 1250°C bedeutet **dichteren Scherben** günstig für Vasen, sowie **bruchfesteren Objekten.**